



### *1<sup>st</sup> Class Service...*

The pledge upon which our company was founded 40 years ago. As employees, we realize that we are the backbone to such a pledge. We will give our talents and our experience to insure the highest quality of service to all of our customers. We take pride in our commitment to excellence, leadership, and improving our network as a company. By doing so our pledge will remain alive and our industry will become stronger because of our existence. Guided by the lessons learned in the past, we move into the future. We are committed to providing our customers, our community and our industry with a level of communication and support that can only be described as **1<sup>st</sup> class**.

### *Locations:*

**Avondale Container Yard, Inc.  
101 Avondale Garden Road  
Avondale, LA 70094**

(Located directly next door to the UP Railroad & 5 miles from the BN Railroad & 15 miles from New Orleans)

**Avondale Container Yard, Inc.  
7800 Almonaster Ave.  
New Orleans, LA 70126**

(Located across the street from the CSX Railroad and roughly 3 miles from NS Railroad)

## *Company Mascot*

In 1980, owner, Michael D. O'Brien took a crew of employees to Inman, South Carolina whereas the first of two Tigers were purchased. The "Tiger" shortly thereafter became Avondale Container Yard's Mascot, which would be known and discussed throughout the industry worldwide. Swimming pool, hanging tire, bowling ball are just a few amenities within the Tigers home, which was located within Avondale's main facility. Many contracts were discussed, pictures were taken, and stories will be remembered from within the tiger's house. As we all know, Tigers are considered wild animals and even though these Tigers have lived their entire lives around and within a specific controlled environment...all could change within a flash. So, to better control the unknown, a group of zoo doctor specialist came in to make a suggestion, which was to "declaw" the tigers. The procedure took several hours, but after all was said and done, everything worked out just fine. The "claws" from both Tigers would later be turned into pendants and given out to a specific set of friends, which had a specific relationship to/with what we called internally- the "Cats". At age 21 and considering a few health issues related to cancer cells within both Tigers, Dr. Gutter from the Audubon Zoo decided it best to put them to sleep rather than let them suffer. How big of a deal was this: Customers and friends flew in from all over the world to attend a very special service, a service that involved a Military type salute and plenty of shared memories that would be discussed and shared way into the next morning! Through a federal permit, we were allowed to have both Tigers fully mounted here within the United States. The first of the two Tigers sit in front of Owner, Michael D. O'Brien's desk and the other hangs suspended from the ceiling in a Sports Bar located nearby. The "Tiger" has a tremendous ability to adapt to change and its surroundings and so do we!

## *Computer Systems*

Avondale Container Yard's main location located in Avondale, Louisiana, has in place a "A Fiber Optic" line providing all employees with the highest level of Internet access and most efficient connection possible. Avondale employees are equipped with the most advanced computer operating systems to date, allowing our employees to be able to communicate with our customers through any/all program types and/or formats.

## *Inventory Management System*

### **DEPOT SYSTEMS**

- Pictures tied to interchanges
- Repair estimates automatically generated per Gate-In
- Truckers having access to system to view available bookings/reservations
  - This will be huge. No more dispatcher calling line or depot to see if equipment is available or if booking has been fulfilled...
- Automatic email can be set every time a specific unit becomes available, booking is entered, unit is repaired...
- EDI repair estimates, Interchanges, quotes...
- LIVE lifts done via wireless device
- Yard physicals done in a quarter of the time
- And so much more technological tools to make it easier and more efficient for all.

## *Chassis Pools and Leasing Companies in House*

- **GCCP** Pool at Avondale West & East Facilities
- **TRAC** at Avondale West & East Facilities
- **FLEXI-VAN** at Avondale West & East Facilities



## *Facility Structure & Capabilities*

### Avondale Container Yard (Avondale, LA): Main Facility

- 40+ acres of land
- 3 acres of asphalt parking
- 30,000 sq./ft. warehouse
- Trans-loading, Block-and-Bracing, Storing...
- Top Loader capable of handling loads up to 100,000 pounds
- Current Storage Types:
  - 20' Containers / 20' Reefers / 20' Tanks / 20' Chassis's / 20' Flat Racks
  - 40' Containers / 40' Reefers / 40' Chassis's / 40' Flat Racks
  - 45' Containers / 45' Chassis's
  - 48' Containers / 48' Chassis's
  - 53' Containers / 53' Chassis's
- 3 Operating Fork Lifts
- Reefer Mechanics
- Yard Mules
- 2 Out-bound Inspection Lines
- Separate In-Gate / Out-Gate Lines
- In / Out Gate Operating Hours from 8 a.m. to 5 p.m.
  - 4:30 Last call for picking up a unit

### Avondale Container Yard (New Orleans East, LA):

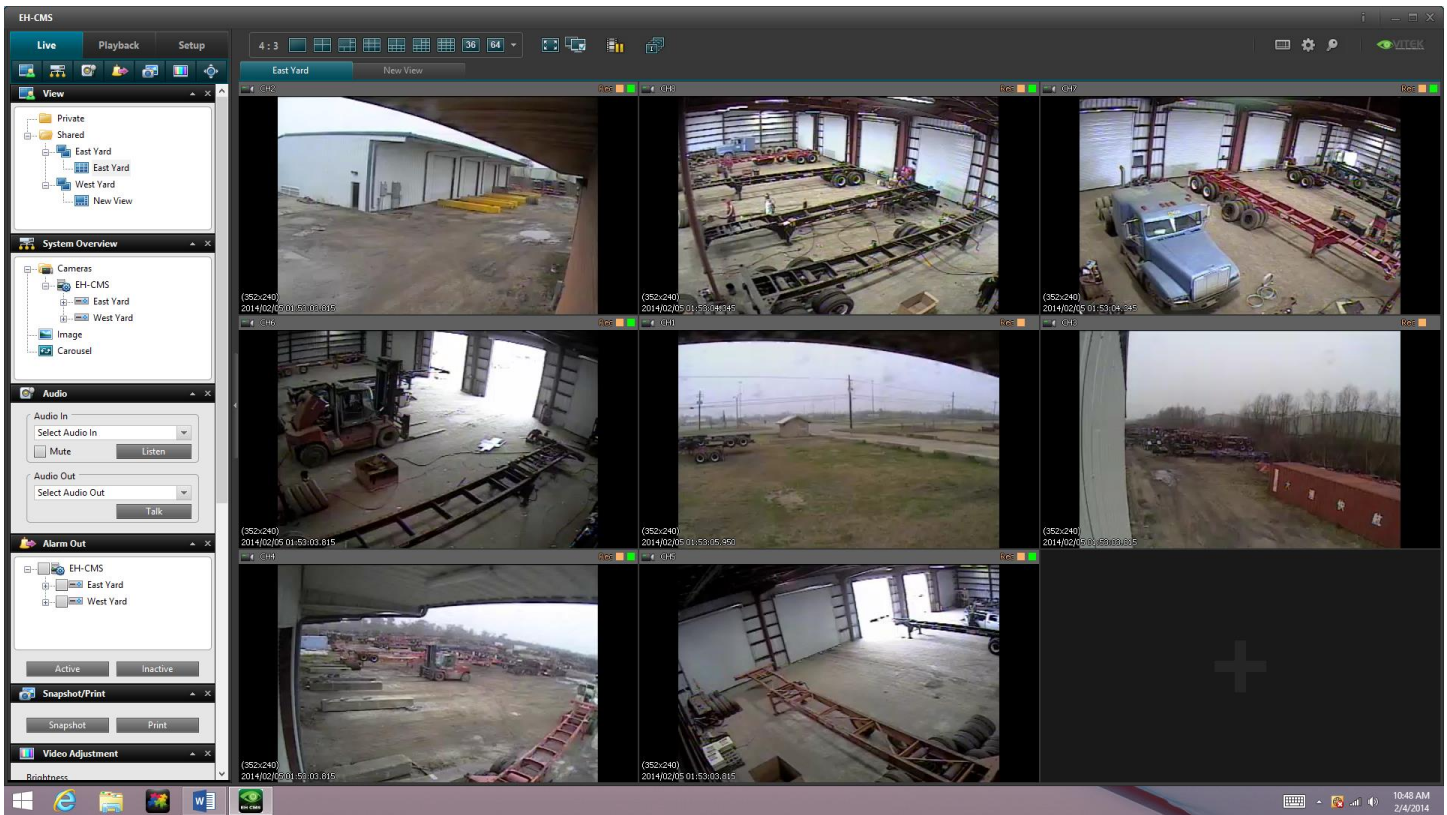
- 35+ acres of land
- Current Storage Types:
  - 20' Containers / 20' Chassis's / 20' Flat Racks
  - 40' Containers / 40' Chassis's / 40' Flat Racks
  - 45' Containers / 45' Chassis's
  - 48' Containers / 48' Chassis's
  - 53' Containers / 53' Chassis's
- 2 Operating Lift
- 100,000-pound Load Handler
- Yard Mule
- **BRAND NEW 10 door enclosed repair facility**
- Office space for customers if needed

## *Facility Video*

- Security is extremely important, and our security cameras located throughout both facilities help us with that along with our 24/7 security personnel.

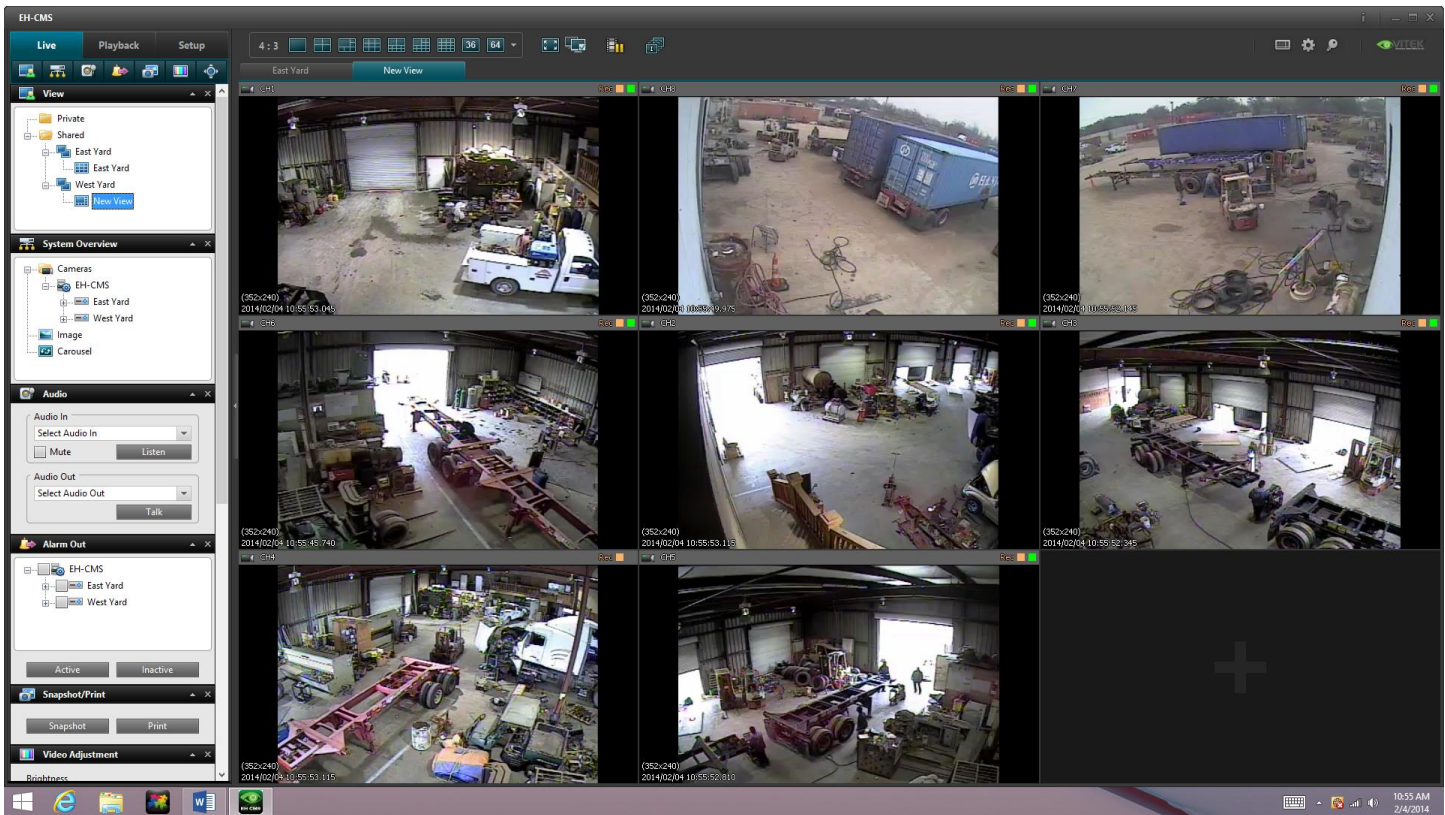
- Gate Camera: We've all heard or received calls from dispatchers saying things like "My drivers have been waiting..." Well our gate camera as well as others can help either support those claims or provide evidence against, which is huge!

## East Facility Camera Examples





## West Facility Camera Examples



## Trucking

### Westbank Container Service

Located inside of Avondale Container Yard's main location is *Westbank Container Service*. Westbank Container Service commenced operation over 40 years ago and has experienced continuous growth. We attribute our growth to our commitment to provide our customers with excellent economical services along with the highest level of communication possible. We specialize in transporting dry van truckload freight as well as many other types such Refrigerated, Flatbed, Over Height and Over Width to name a few. No job is too big or small and will always receive the highest level of quality and effort. We take pride in our commitment, which ensures that every delivery is made safe and on time.

#### Company Info:

- Over 20 operating **COMPANY OWNED** trucks
- Operating 24 hours a day / 7 day a week if possible
- All drivers are given random drug / Alcohol test
- Separate email addresses for receiving Job/Work orders and day to day updates
- Our dispatch department is fully equipped with all the necessary tools to ensure that the day to day operations can be easily communicated.
- Commercial General Liability
- Truck / Automobile Liability Insurance
- Cargo Insurance
- GPS in every truck

# *Depot Charges*

At Avondale, we strive to make every transaction, activity or job as simple and easy as possible. So, we are giving our customers an option on how they would like the Gates, Lifts and Storage charges to be billed.

1. **Flat Rate** = Gates, Lifts and Storage is all charged at arrival of unit.
2. **Separate** = Each activity billed separately

## **Gates**

- *In-Gate*, includes a full inspection of unit(s), Interchange, user access, reporting...
- *Out-Gate*, unit(s) inspected, associated booking number is identified, Interchange is made, user access, reporting...

## **Lifts**

- *Empty to the ground*
- *Empty from the ground*
- *Swing, unit never touches the ground.*
- *Load to the ground*
- *Load from the ground*

## **Storage**

- Storage:
  - Equipment billed weekly for all associated billable days or per customers request (monthly)

## **M & R**

- Customer Time & Task Schedule in conjunction with Avondale's. Discussed and negotiated per...
- A flat labor rate is made for all our customers

## **Reefer**

- *Shore Power*, this is a fixed rate.

# *Refrigeration Department*

Avondale Container Yard employs Certified Reefer Technicians to ensure that every reefer related issues is given the utmost attention. Our technicians are constantly being educated on the new technologies presented within this industry. All units are inspected thoroughly by our technicians upon arrival. Listed below are a few special services offered within our staff and our facility:

- Monitoring 24/7
- Pre-Trips and operating checks to Reefers and Gensets done daily.
- All Reefers are Steam cleaned
- 20 – 230v & 460v power outlets for shore power
- Ability to download microprocessors
- Mechanic shop for cosmetic damages to Reefer or Genset
- Ability to mount and dismount Gensets
- Fuel pumps on facility for easy fueling access
- Final inspection conducted at out-gate by Reefer Technician

## *Closing Remarks*

Everyday we strive to provide you the best service, best communication and the best support available. Your complete satisfaction is our goal. If we have met it, great! If not, please do not hesitate to call me directly so that I can instruct my staff on what changes need to be put in place immediately. At this time, I would like to thank you for the time you have invested in reading this promotional package and for your interest in my company. Thank you and God Bless.

*Michael W. O'Brien*

President

[mwo@avondale.net](mailto:mwo@avondale.net)

504-460-6660 Cell

504-436-8696 Office



If you would like to know more or have specific questions pertaining to anything mentioned within, please do not hesitate to give me a call or send me an email.

(504) 460-6660 Cell / (504) 436-8696 Office / [mwo@avondale.net](mailto:mwo@avondale.net)

Mailing: PO Box 9150, Bridge City, LA 70096